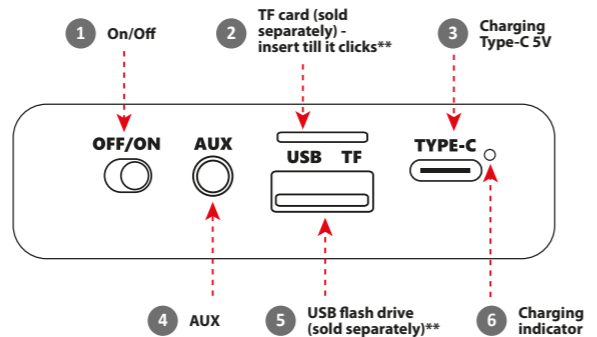
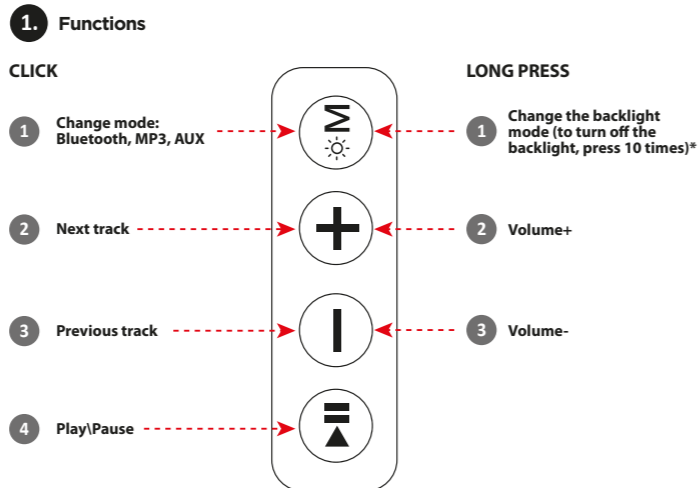
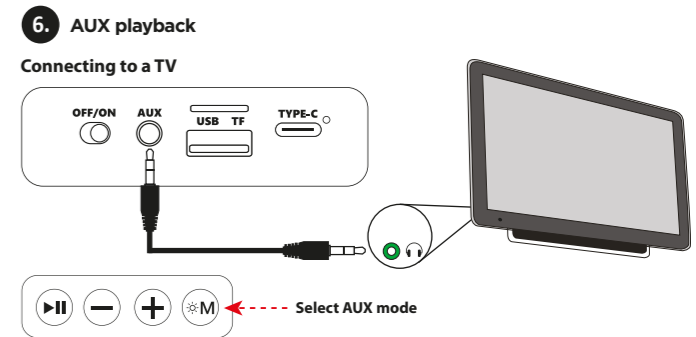
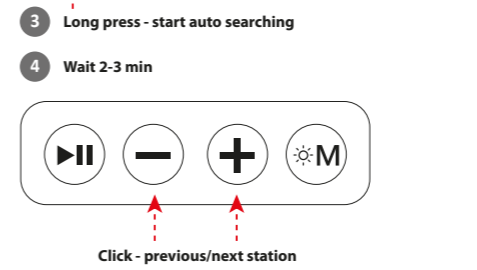
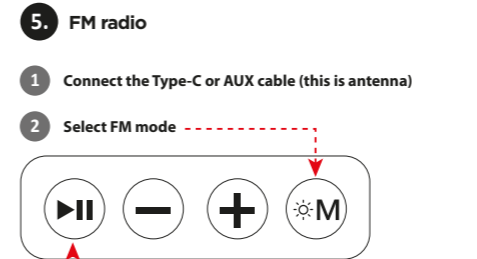
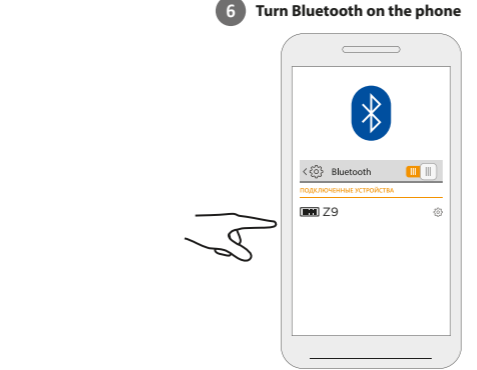
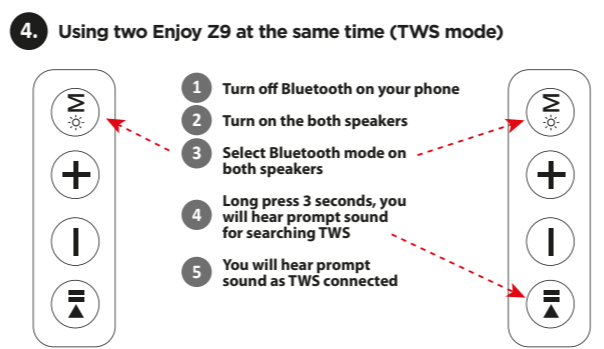
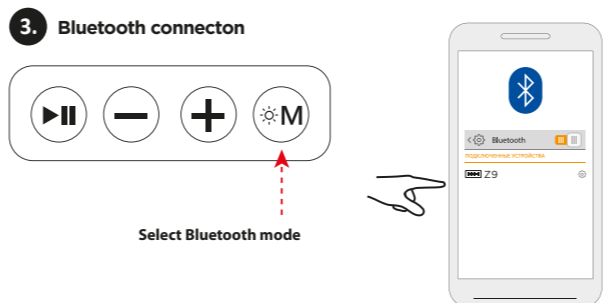
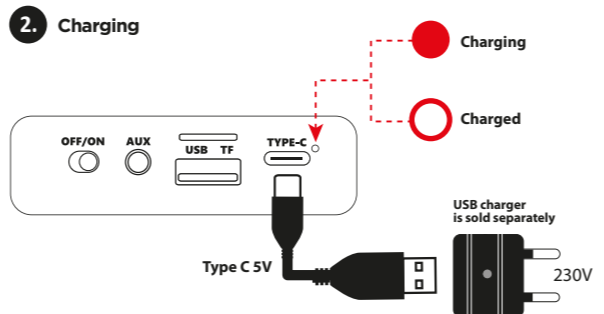


Z9

Sound bar  
Operation manual



\*When the speaker is operating with a backlight, there may be a slight background sound that can be heard in absolute silence; if it bothers you, turn off the backlight  
\*\*USB flash drive and TF drive must be up to 16GB in size and formatted in FAT32 system



ATTENTION: if the TV does not have a headphone output, you cannot connect a speaker to it!

